

"Bird Lives!"

Soprano

The Music Of Charlie Parker

Arr. Wendell Hobbs

Maestoso ♩ = 120)

f

9 FAST SWING (♩ = 184)

Au Privave

Solo

21

mf *f* *mf*

85 C7 G7 E7

89 A-7 D7 G7 E7b9 A-7 D7alt

93

97

101

105

109

113 Rit.

117 Maestoso (♩ = 120)

121



SLOWLY (♩ = 96)

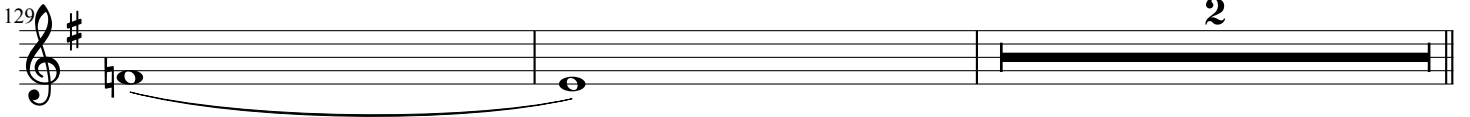
125

Lover Man

125




129

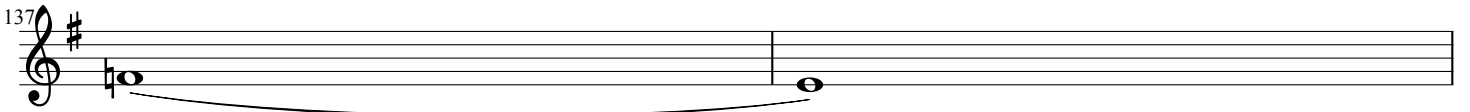


133

133



137

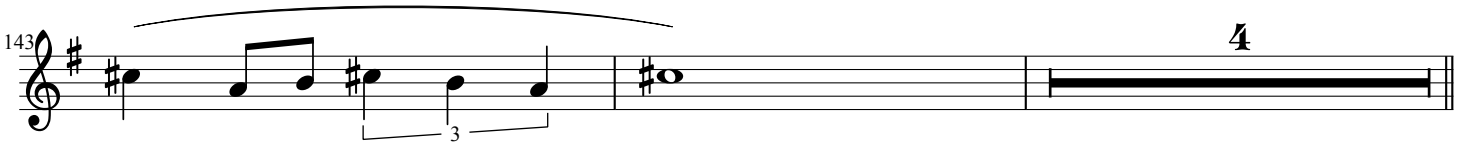


141

139



143

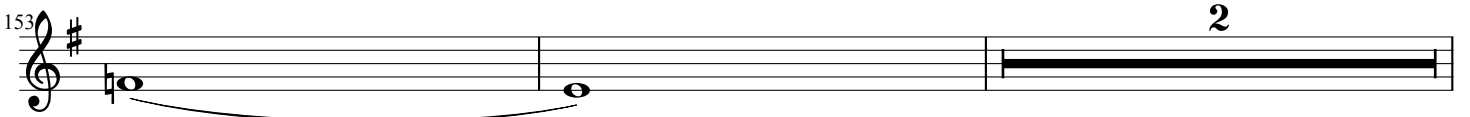


149

149

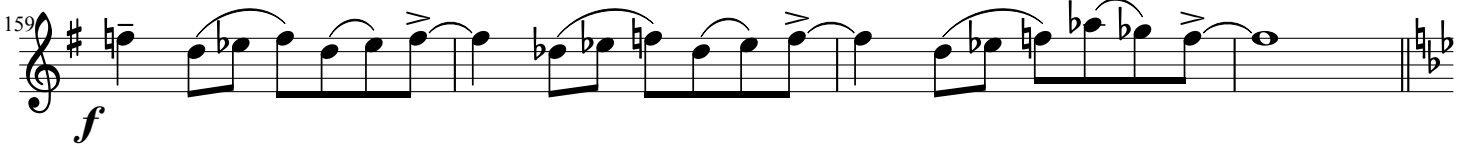


153



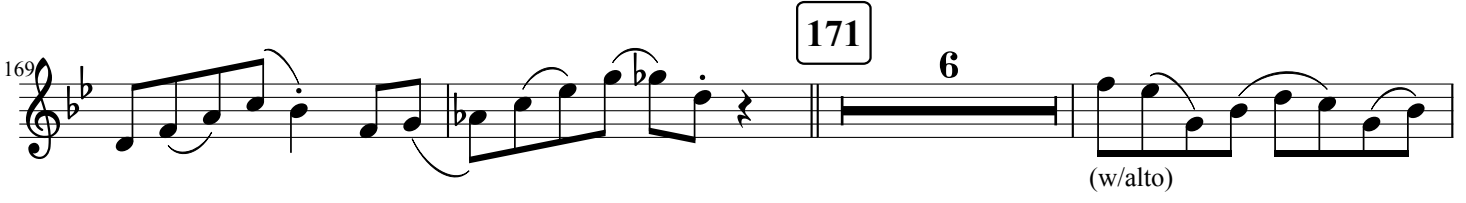
157 

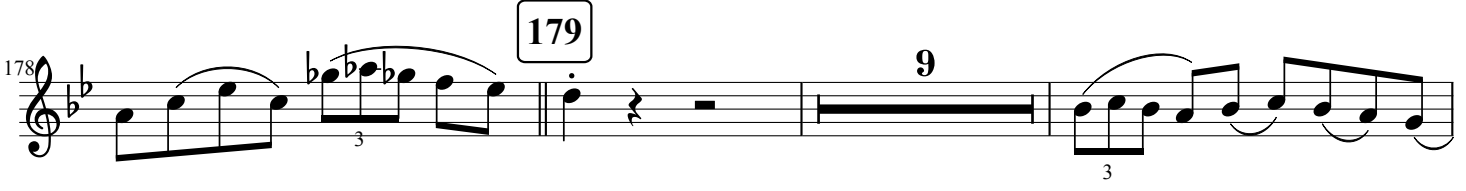
FAST SWING (♩ = 200)

159 
f

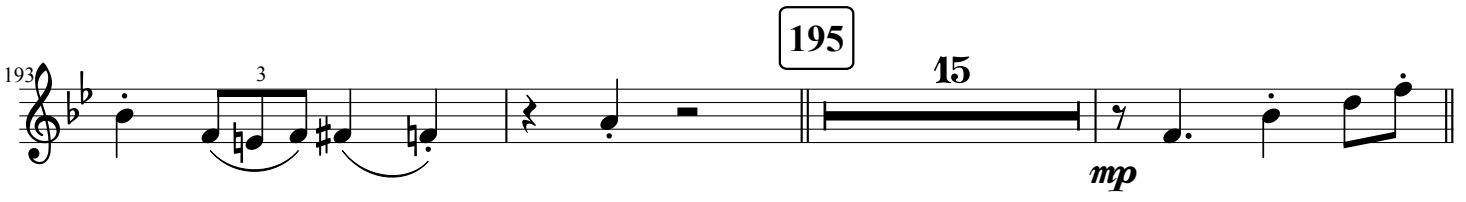
163 Donna Lee

163 
Solo *mf*

169 
171 6 (w/alto)

178 
179 9

190 

193 
195 15 *mp*

211 
211 7

215 
2

219 **219**
p

223 **227**
Solo

231

235 **6**
3

243 **243**
6

251 **251**
3

255

259 **3**

260 **f**

"Bird Lives!"

Alto

The Music Of Charlie Parker

Arr. Wendell Hobbs

Maestoso $\text{♩} = 120$

f Solo tutti

End Solo

9 FAST SWING ($\text{♩} = 184$) 21
Au Privave 12 3 8

33 Solo

45

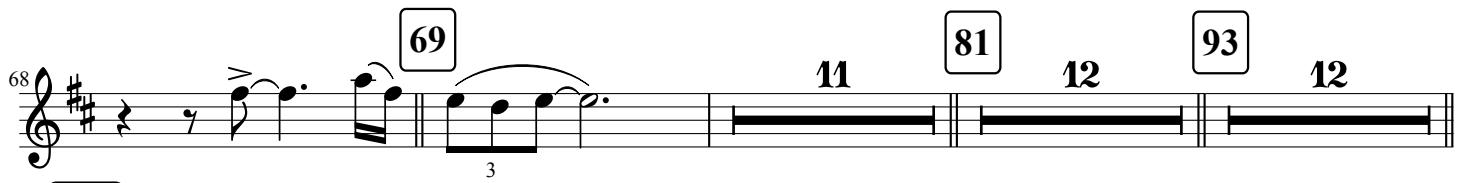
43

48

53

57

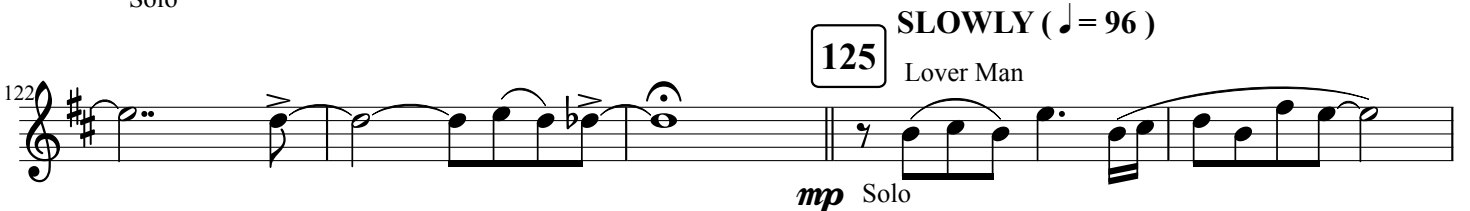
63  Musical notation for measures 63-68. Measure 63 starts with a quarter rest followed by eighth notes. Measure 64 has a triplet of eighth notes. Measure 65 has a quarter rest followed by eighth notes. Measure 66 has a triplet of eighth notes. Measure 67 has a quarter rest followed by eighth notes. Measure 68 has a quarter rest followed by eighth notes.

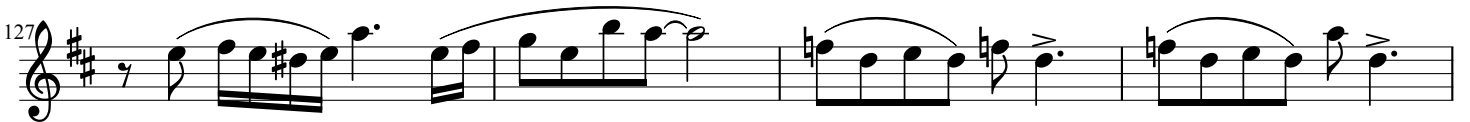
68  Musical notation for measures 69-73. Measure 69 has a quarter rest followed by eighth notes. Measure 70 has a quarter rest followed by eighth notes. Measure 71 has a quarter rest followed by eighth notes. Measure 72 has a quarter rest followed by eighth notes. Measure 73 has a quarter rest followed by eighth notes.

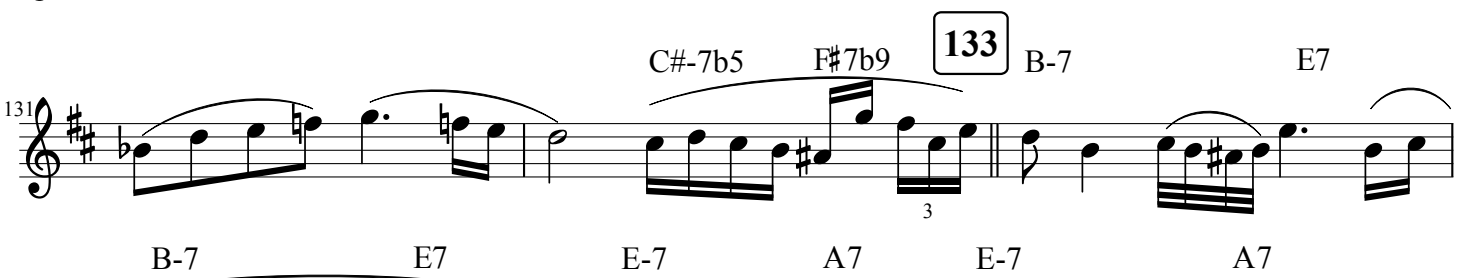
105  Musical notation for measures 105-109. Measure 105 has a quarter rest followed by eighth notes. Measure 106 has a quarter rest followed by eighth notes. Measure 107 has a quarter rest followed by eighth notes. Measure 108 has a quarter rest followed by eighth notes. Measure 109 has a quarter rest followed by eighth notes. *p* fall off

110  Musical notation for measures 110-116. Measure 110 has a quarter rest followed by eighth notes. Measure 111 has a quarter rest followed by eighth notes. Measure 112 has a quarter rest followed by eighth notes. Measure 113 has a quarter rest followed by eighth notes. Measure 114 has a quarter rest followed by eighth notes. Measure 115 has a quarter rest followed by eighth notes. Measure 116 has a quarter rest followed by eighth notes. *Rit.*

117 **Maestoso** (♩ = 120)  Musical notation for measures 117-124. Measure 117 has a quarter rest followed by eighth notes. Measure 118 has a quarter rest followed by eighth notes. Measure 119 has a quarter rest followed by eighth notes. Measure 120 has a quarter rest followed by eighth notes. Measure 121 has a quarter rest followed by eighth notes. Measure 122 has a quarter rest followed by eighth notes. Measure 123 has a quarter rest followed by eighth notes. Measure 124 has a quarter rest followed by eighth notes. *Solo*

125 **SLOWLY** (♩ = 96)  Musical notation for measures 125-126. Measure 125 has a quarter rest followed by eighth notes. Measure 126 has a quarter rest followed by eighth notes. *mp Solo* **Lover Man**

127  Musical notation for measures 127-130. Measure 127 has a quarter rest followed by eighth notes. Measure 128 has a quarter rest followed by eighth notes. Measure 129 has a quarter rest followed by eighth notes. Measure 130 has a quarter rest followed by eighth notes.

131  Musical notation for measures 131-133. Measure 131 has a quarter rest followed by eighth notes. Measure 132 has a quarter rest followed by eighth notes. Measure 133 has a quarter rest followed by eighth notes. *C#-7b5* *F#7b9* *B-7* *E7*

134  Musical notation for measures 134-136. Measure 134 has a quarter rest followed by eighth notes. Measure 135 has a quarter rest followed by eighth notes. Measure 136 has a quarter rest followed by eighth notes. *B-7* *E7* *E-7* *A7* *E-7* *A7*

137  Musical notation for measures 137-140. Measure 137 has a quarter rest followed by eighth notes. Measure 138 has a quarter rest followed by eighth notes. Measure 139 has a quarter rest followed by eighth notes. Measure 140 has a quarter rest followed by eighth notes. *D7+9* *G7*

141 **4** Em7 Em7 A7

147 DMaj7 C#m7b5 F#7b9 **149** Bm7 E7

150 Bm7 E7 Em7 A7

152 Em7 A7 D7+9 G7

155 F-7 Bb7 E-7 A7

As Written

FAST SWING (♩ = 200)

159 *f*

163 Donna Lee **171**

163 **8** Lead

175 **179** (w/sopr.)

180 **2** Solo

186 **4** (w/sopr.)

194 195 15 211
mp

213 2

219 219

223 3

227 8 *Lead* 3

239 3

243 2 *Solo*

248 251 3

255 2

259 3 *f*

53 **4**

57 **57**

61 **7** **69** **11**

81 **81** **12** **93** **12** **105** *p*

107 *fall off* **5**

115 *Rit.*

117 **Maestoso** (♩ = 120)

121

125 **SLOWLY** (♩ = 96)
Lover Man
p

129 **2** **133**

134

138

141

141

mf

145

149

p

151

155

2

FAST SWING (♩ = 200)

159

f

163 Donna Lee

mf Solo

171

4

(w/alto)

174

2

179 Solo

183 Solo

189 (w/3opr.)

195 Solo ad lib

197 C7 Cm7 F7

201 Fm7 Bb7 EbMaj7 Ab7

205 BbMaj7 C7

209 Cm7 F7

211 BbMaj7 G7 C7

215 Am7b5 D7b9 Gm6



105



117

Maestoso (♩ = 120)



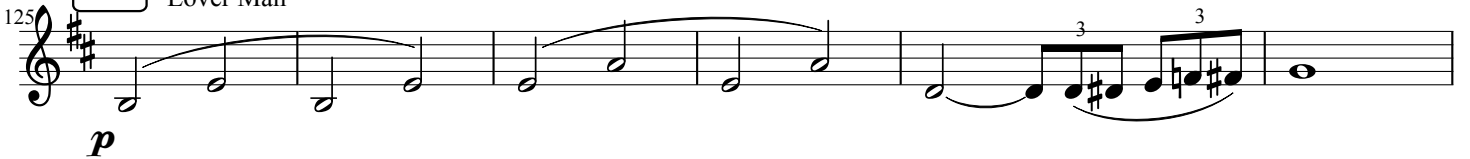
Rit.



SLOWLY (♩ = 96)

125

Lover Man



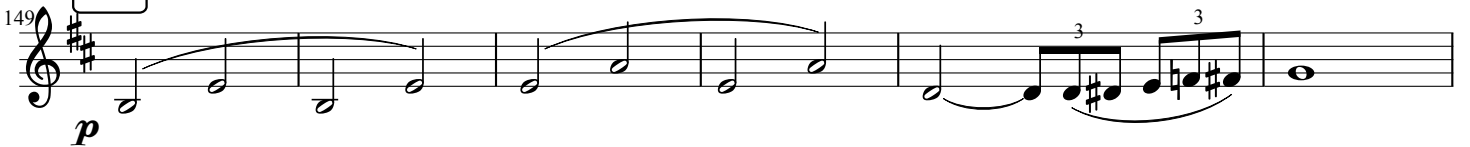
133



141



149



211



219



227



243



251

